

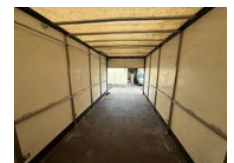
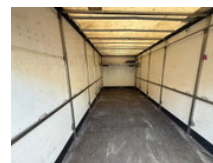
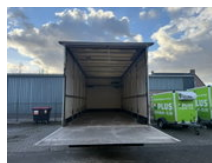


BEKKERS TRUCKS

Mercedes-Benz Atego 815 steel suspension. laadklep.manual gearbox

Algemene kenmerken

| | |
|--------------------------|---------------|
| Merk | Mercedes-Benz |
| Subcategorie | Bakwagen |
| Kentekenplaat | BH-LV-24 |
| Tellerstand | 330.668km |
| Bouwjaar | 1998 |
| Datum eerste registratie | 26-06-1998 |
| Conditie | Gebruikt |
| Brandstof | Diesel |
| Emissieklasse | Euro 2 |



Eigenschappen

| | |
|---------------|---------|
| Ledig gewicht | 4.880kg |
| Laadvermogen | 2.610kg |

| | |
|-----|---------|
| GWW | 7.490kg |
|-----|---------|

| | |
|--------|-------|
| Lengte | 804cm |
|--------|-------|

| | |
|---------|-------|
| Breedte | 254cm |
|---------|-------|

Mercedes-Benz Atego 815 steel suspension. laadklep.manual gearbox

Technische specificaties

| | |
|--------------|-------|
| Aantal assen | 2 |
| Vermogen | 150hp |

Omschrijving

bladgeveerd,laadklep,handgeschakeld.

Accessoires